

Ash Lodge 40 x 20 ft

Interior

- Constructed to BS 3632
- Dial in operation for heating & External lighting
- Tiled entry lobby & store
- Condensing combi gas boiler
- 5 Ring gas hob, Built in double electric oven & microwave
- High gloss kitchen with granite worktop
- Integrated fridge/freezer, dishwasher and washer/dryer
- Chrome handles, switches and low energy spots
- Integrated sound system throughout with IPOD connection
- Feature wallpaper to lounge
- 3+2 lounge suite and coffee table
- Wall mounted focal fire
- Dining table & 6 Chairs
- Concertina folding doors to Lounge and master bedroom
- Mirrored slide robes and floating bedside lockers
- Interior Oak shaker doors
- Granite top vanity to family bathroom and Ensuite
- Underfloor Heating to Bathroom and Ensuite
- Walk-in wetroom
- Body spray shower to en-suite
- Half height tiling to bathroom & en-suite, with full height to shower in ensuite and over bath
- Colour co-ordinated curtains, blinds, bedding and cushions
- Carpet/ laminate flooring throughout
- Chrome Towel rail to bathroom & en-suite
- Solar powered rain sensor velux windows
- Flush internal joints

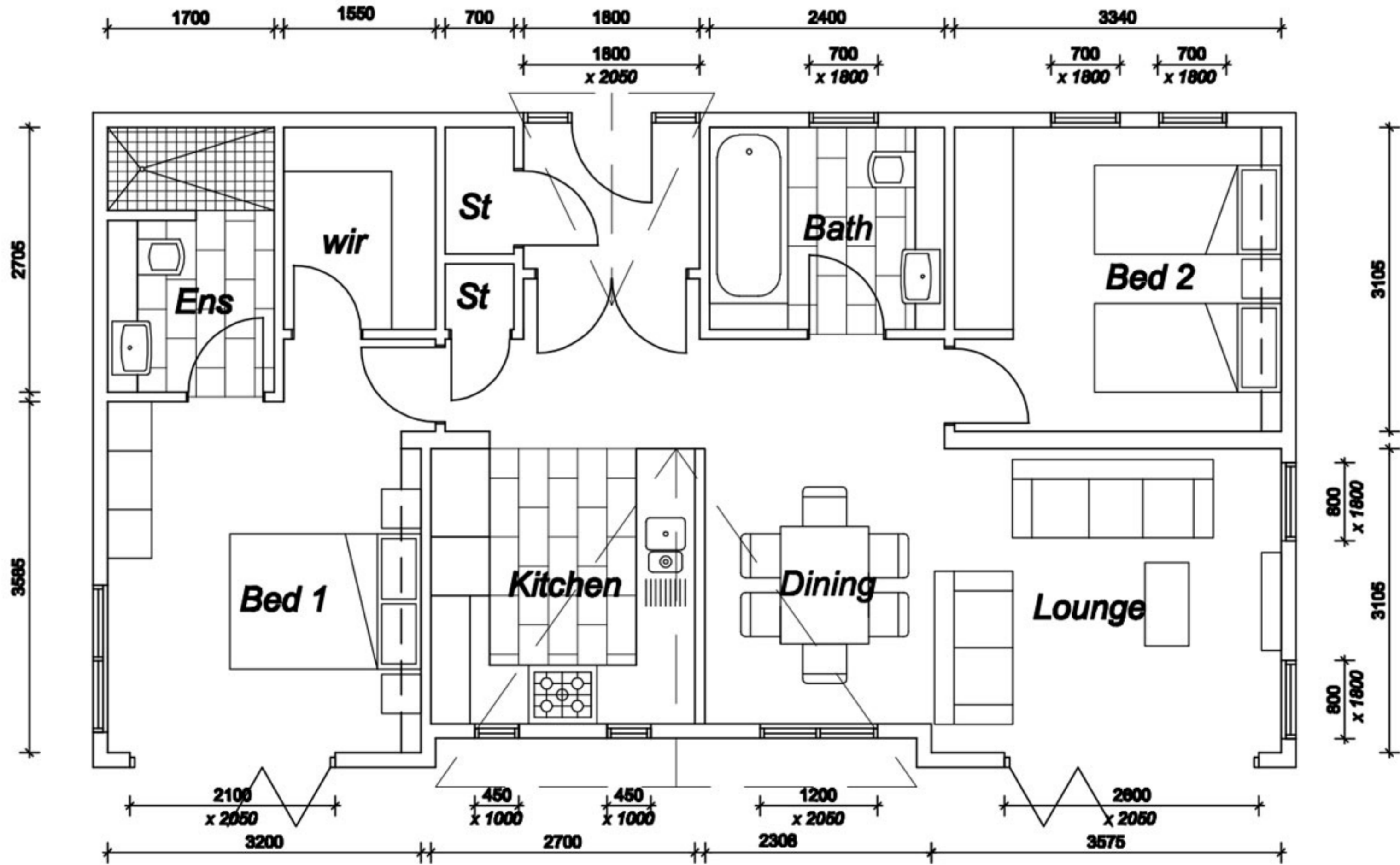
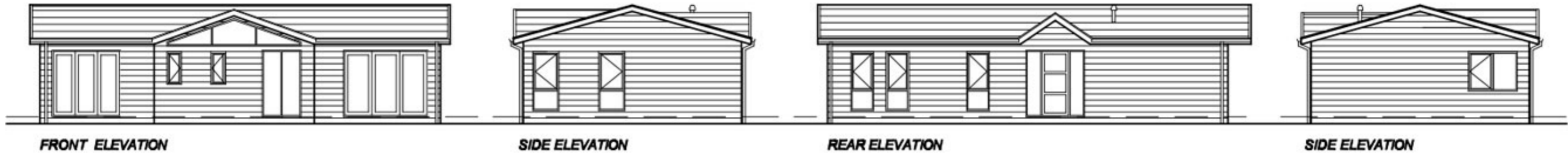
Exterior

- Optional Canexel or redwood cladding
- Wood effect uPVC doors and windows with low e glass
- Wood effect uPVC fascia & soffits
- Dormer gable over side door
- 700mm overhang to front gable & integrated spots
- Slot windows to lounge, dining & bedrooms

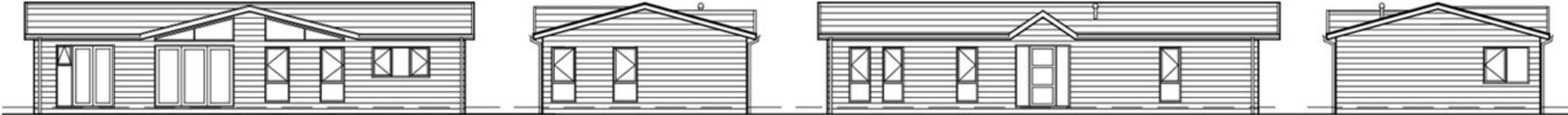
Optional Extras

- Additional velux rooflights
- External tap
- External powerpoint

Ash Lodge



40 x 22 ft

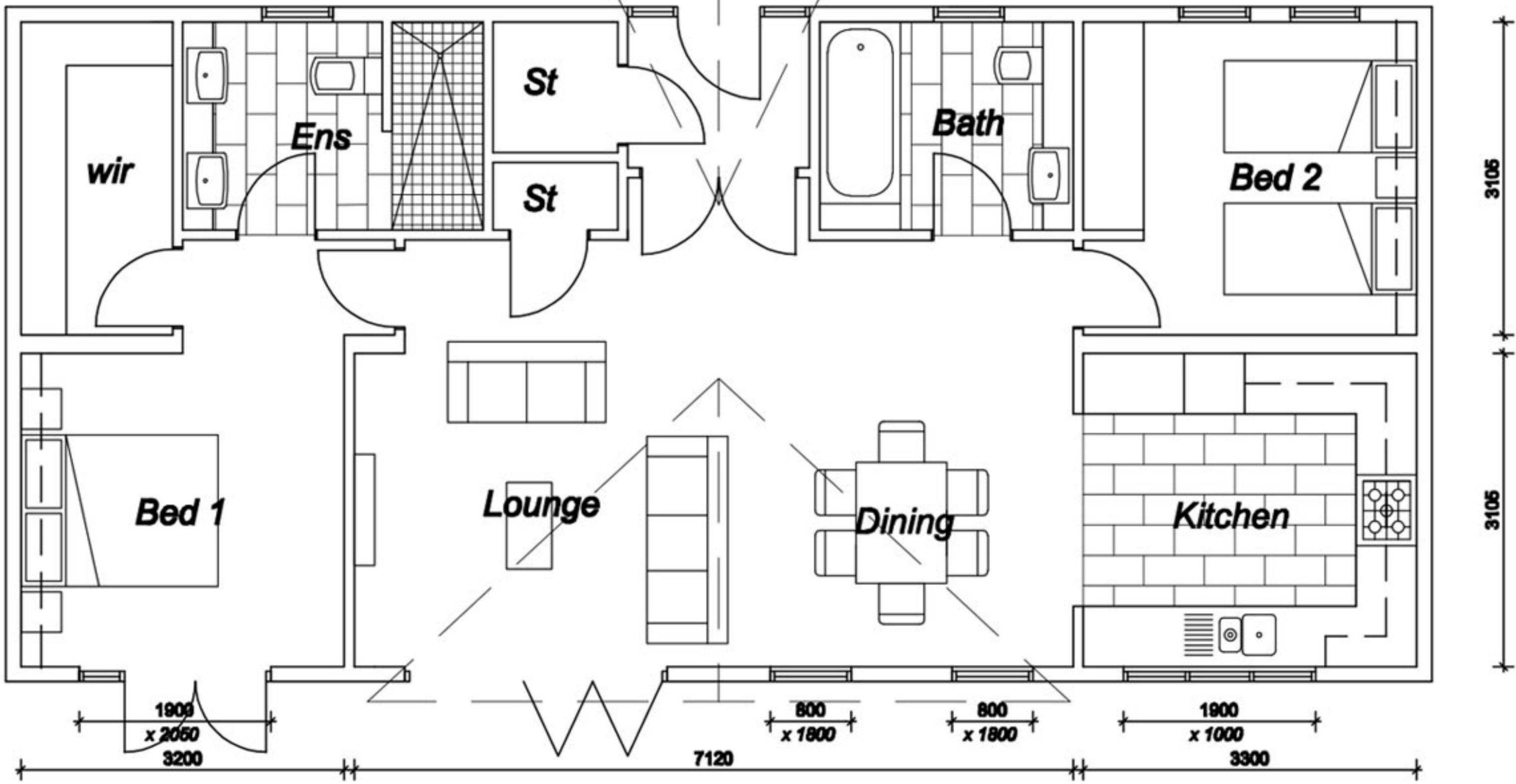
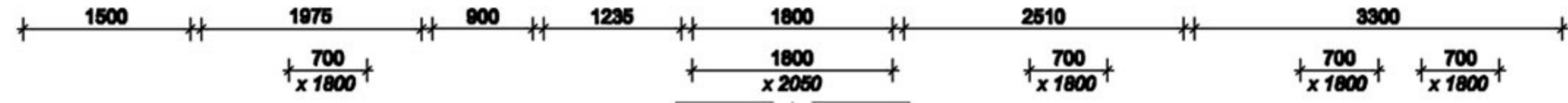


FRONT ELEVATION

SIDE ELEVATION

REAR ELEVATION

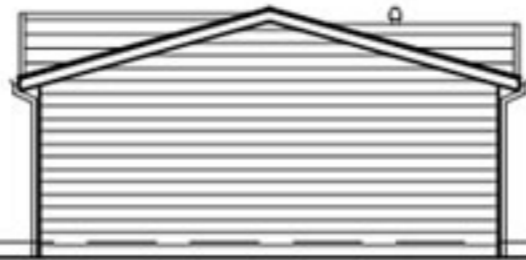
SIDE ELEVATION



46 x 22 ft



FRONT ELEVATION



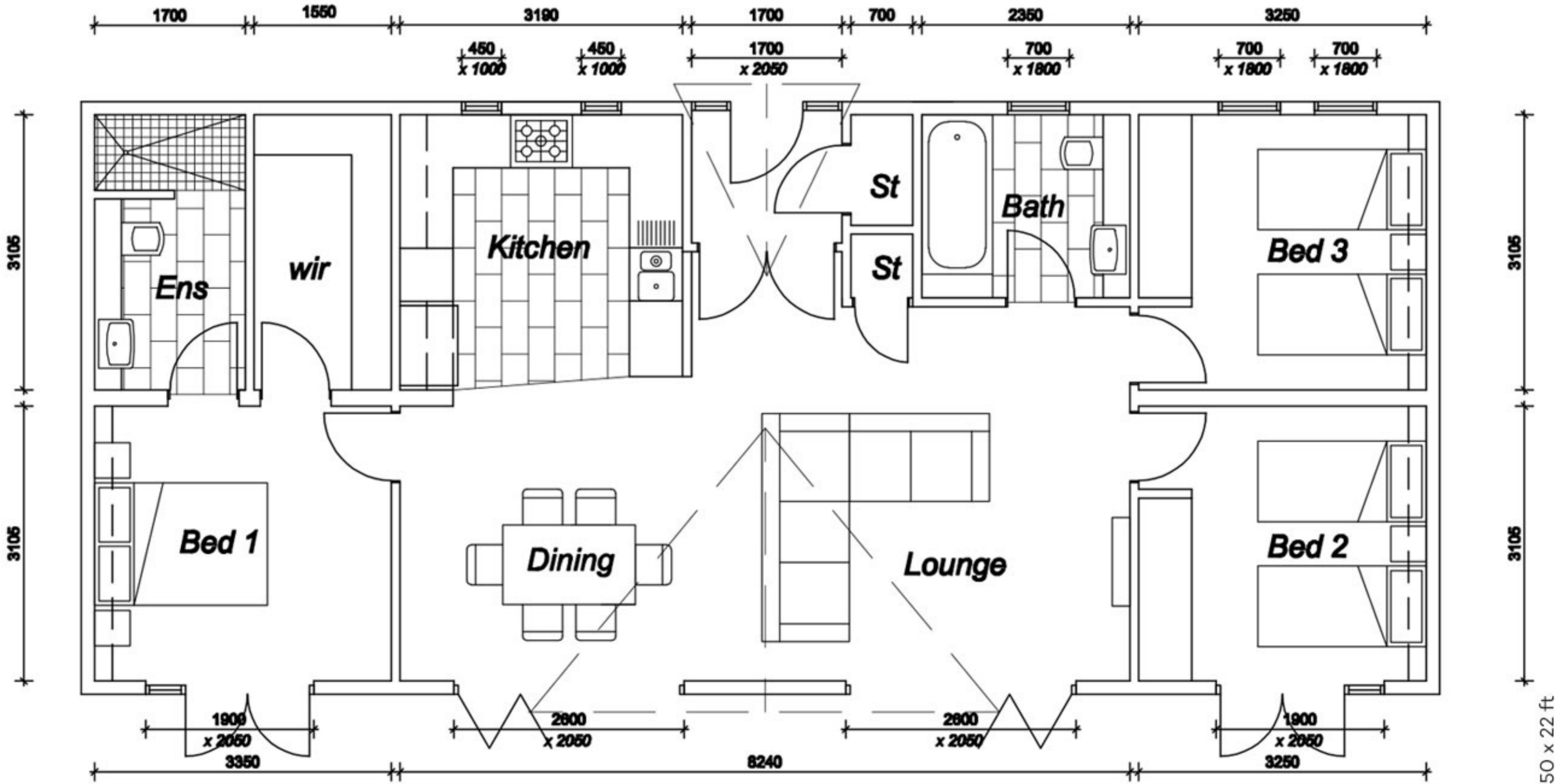
SIDE ELEVATION



REAR ELEVATION



SIDE ELEVATION



50 x 22 ft